

Office to let

Tudor Center

Iași, 126 Ciurchi st.

Building information

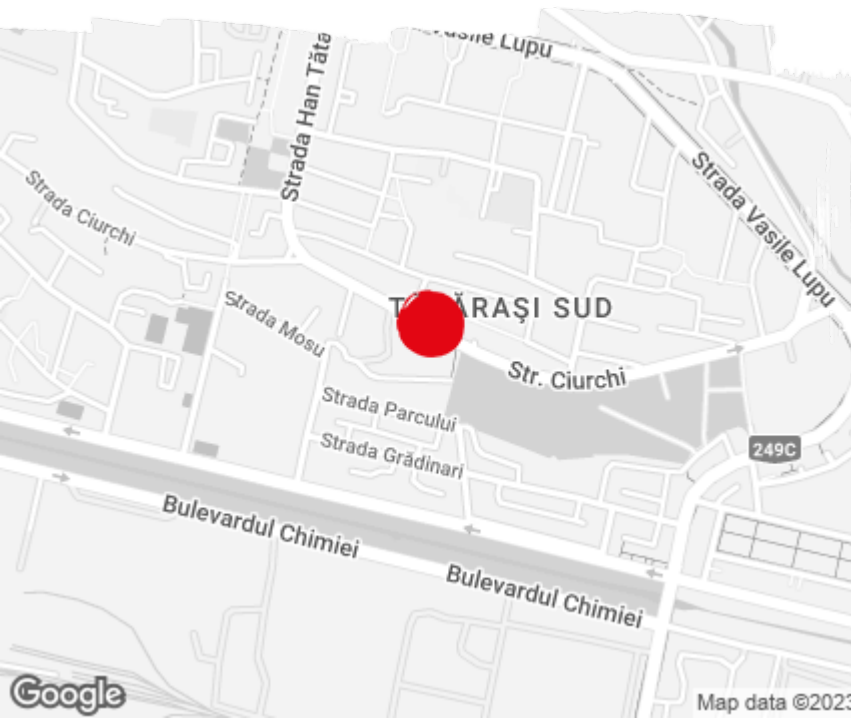
Building status	Existing
Year of reconstruction	2020
Parking ratio	1 / 100 sq m
Total building area	7 978 sq m

Commercial terms

Office space*	after login *
Parking	after login *
Service charge*	after login *
Minimum lease term	after login *
Availability	after login *

* Asking terms for m²/month

Location



Available space

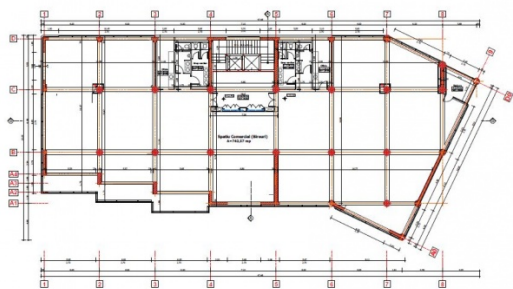
1 394 sq m

Available office space

275 sq m

Minimum office space

Typical floor plan



Available space

Floor	Vacant space	Availability
2	please contact us *	please contact us *
3	please contact us *	please contact us *
8	please contact us *	please contact us *
Total	after login *	

Public transport

Bus: 27

Tram: 1, 11

Contact

+40 21 302 3400

More information